

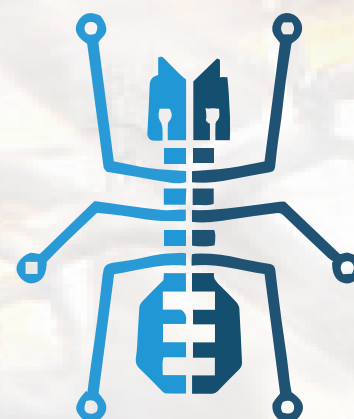
**AIF S.L.**  
**AUTOMATION IN FOUNDRIES**

**[www.aifsl.es](http://www.aifsl.es)**

AIF S.L. (Automation in Foundries S.L.) is a company with over 15 years experience specialized in work-cell automation, as well as in the design and making of auxiliary materials and supplies for the aluminium die-cast sector.

AIF has an exclusive R+D department where all kinds of industrial automation projects are developed, from 3D design to construction and safe start-up in the customer's facilities.

Our success is based largely on our experienced staff, highly specialized in the field of PLC programming to implement new projects or modify current on-going projects.



**AIF S.L.**  
**AUTOMATION IN FOUNDRIES**

**[www.aifsl.es](http://www.aifsl.es)**

**REPRESENTATIVE OF:**

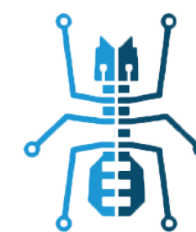
***YIZUMI* 伊之密**

**MAQUINARIA DE  
INYECCIÓN**



**PRENSAS DE  
DESBARBADO**

Rambla Països Catalans, 18 Nave 45  
08800 - Vilanova i la Geltrú - Barcelona  
[info@aifsl.es](mailto:info@aifsl.es)



**AIF S.L.**  
**AUTOMATION IN FOUNDRIES**



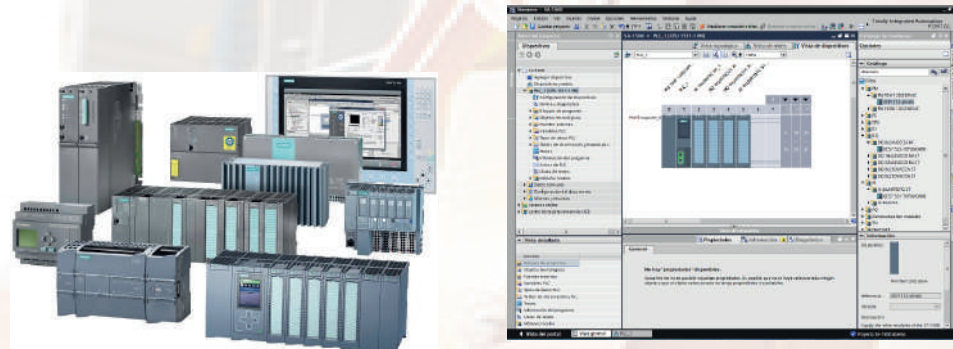
**AIF S.L.**  
**Automation in foundries**



## SERVICES

### PLC Programming

PLC and HMI programming and application design as well as ongoing software modifications to optimize production lines.



### Design and assembly of electrical panels

Design, assembly and installation of low voltage electrical panels, automation and communication for all types of machinery with high quality materials.



### Robot Automation

Robot design, installation and programming for the major manufacturers in order to automate successfully all the industrial procedures. Supply and integration of auxiliary elements for the manufacturing process, implementing a turnkey **work-cell**.



## PRODUCTS

### T-LIFT

**T-LIFT** is an automatic lifting system for cooling aluminium parts. **T-LIFT** release the robot to implement different tasks during the same work cycle.

Intelligent cooling tank with temperature control and ultrasound level sensors.



### MouldTemp

**Mouldtemps** allows to control both flow and temperature of several circuits meeting the customer's needs.

Mouldtemp has up to 15 cooling circuits.

Centralized mold cooling panel where the flow and temperature of each circuit is controlled individually, being able to manage the entire system through a touch screen HMI.

**Mouldtemp** enables the foundry process to be more stable as well as to achieve a **higher part finishing quality** and a **longer mould lifetime**.



### FlowControl

**FCD-1100** allows to control the product flow used in each lube cycle. By using a flow meter at each spraying line, it is possible to find out the consumed lube quantity. Furthermore, **FCD-1100** allows not only to view the consumed lube quantity but also to warn of any consumption failure by excess or shortage.

**FlowControl** allows to enhance and expand the mould lifetime, to optimize the flow consumption and control the whole manufacturing process.

